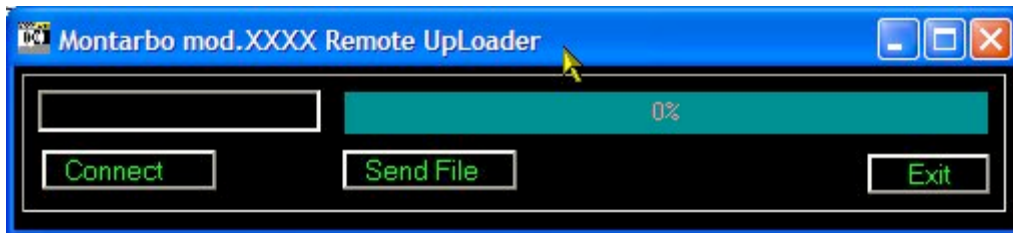


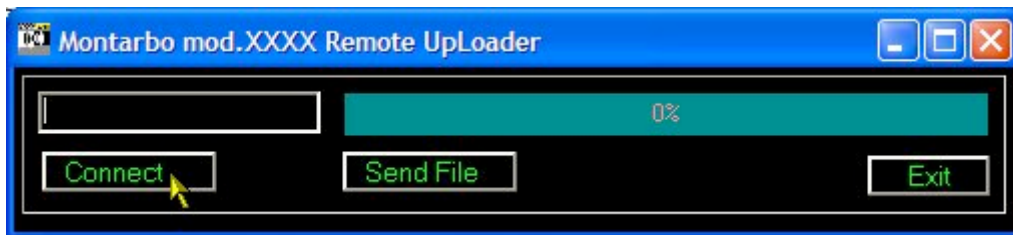
LM24 – PLM6800 FirmWare update

1. With the active speaker switched off, connect the speaker and the PC via the LD2.4 interface.
2. Switch on the LM24 digital controller or the PLM6800 powered controller, whilst pressing both the **[Mute1]** and **[Mute3]** keys. The message *BootLoader is active.* will appear on the display. Now the DSP is waiting for the firmware upload.
3. Open the above created folder and double click on the file corresponding to your controller (for example click on the file **PLM6800 01 Uploader.exe**, to upload the FirmWare **version 0.1** on your powered controller **mod. PLM6800**). The program works on its dedicated system only.

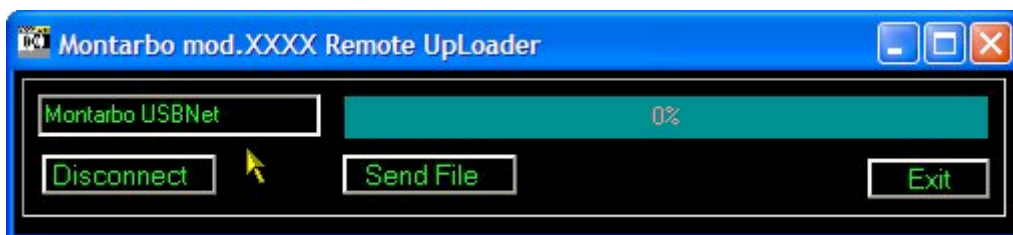
The program window is like the following:



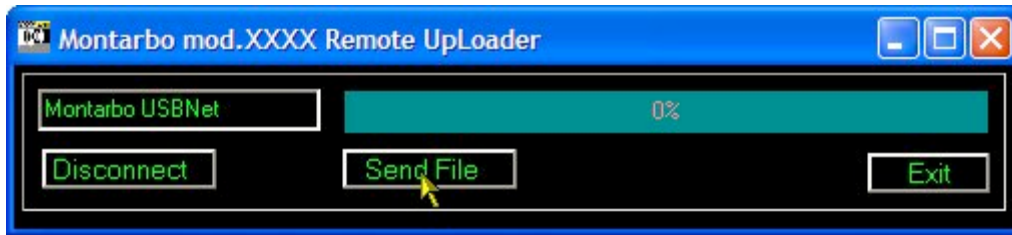
Click the [Connect] button:



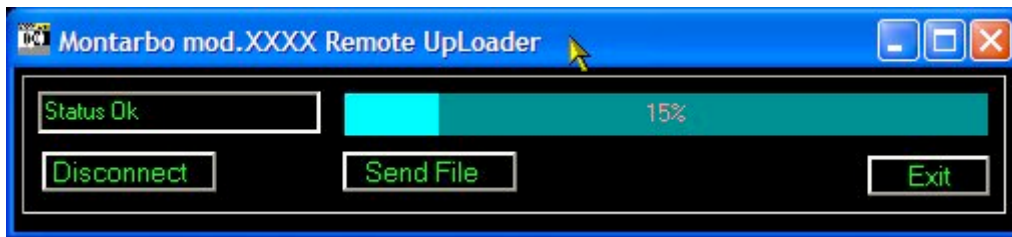
The "Montarbo USBNet" message will be displayed



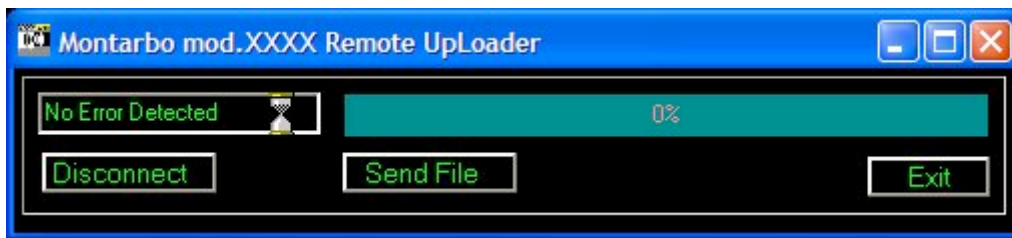
Click the [Send File] button



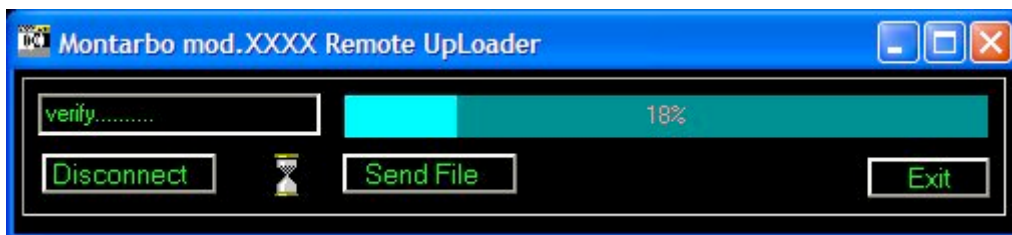
The "Status OK" message will be displayed, and the status bar will show the file upload progress



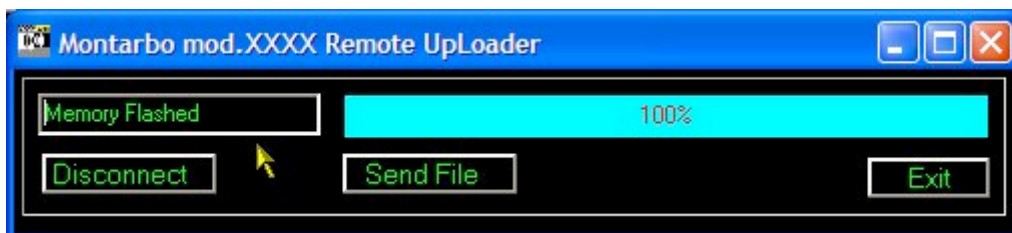
At the end of the up-load a "No Error Detected" message will be displayed



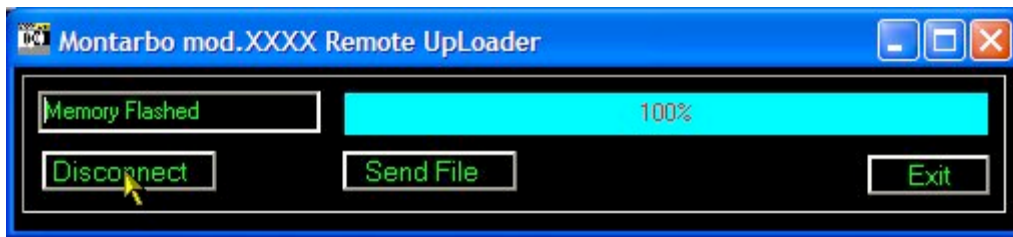
Now the program will check the DSP memory



Once checking is completed, the "Memory Flashed" message will be displayed



Now the PC must be disconnected from the speaker by clicking the the [Disconnect] button



Before using the speaker s, they must be power cycled (by switching them off and on) to have them boot with the new firmware.